

ABOUT US

At INFOBIT AV, we bring innovation to life with cutting-edge audio-visual solutions. Our expert R&D team designs reliable, high-performance systems tailored to meet **modern** demands, all driven by our core values: "**Quality, Stability, Durability, and Usability.**"

With a 3,000-square-meter production facility and a team of experienced industry professionals, we are committed to exceeding expectations through continuous investment in R&D and precision manufacturing.

Guided by the principle of "**Customer First, Quality Always,**" we deliver solutions that set the standard for excellence, redefining the future of AV technology.

Let's innovate together and create a future defined by seamless and powerful AV experiences.



iMeeting PD156 (15.6" retractable screen)

"Blending Style with Performance"

Manufacturing Plant Insights



Advanced Processing Center



Production Floor



Advanced Processing Center



Aging Test

iMeeting PD156 (15.6" retractable screen)

Category	Item	Infobit	Other Manufacturers
Materials	LCD Screen	<ul style="list-style-type: none"> - High-frequency grid LCD module. - IPS wide viewing angle, high color gamut, vibrant colors. - Comparable to ordinary notebooks (slightly behind high-end). - Uses higher specification LCD modules. 	<ul style="list-style-type: none"> - Uses cheaper LCD modules. - Low color gamut, poor color effects. - Significant quality difference compared to Infobit.
	Touchscreen Glass	<ul style="list-style-type: none"> - Fully laminated 10-point capacitive touch glass. - High touch accuracy, smooth experience. - No risk of detachment or dust/moisture ingress. - Ultra-narrow black borders, high screen-to-body ratio. - Premium 2.5D curved glass for refined visuals. 	<ul style="list-style-type: none"> - Frame-mounted (non-fully laminated). - Low accuracy, prone to interruptions. - Screen whitening, dust/moisture ingress, detachment risk. - Wider black borders, lower screen-to-body ratio.
	Lifting Guide Rails	<ul style="list-style-type: none"> - Precision industrial linear guide rails. - High precision, rigidity, and long lifespan. - Used in high-precision 3D printers and measuring instruments. - Higher cost due to superior quality. 	<ul style="list-style-type: none"> - Uses ordinary guide rails. - Low precision, prone to jamming and seizing. - Short lifespan. - Lower cost but inferior performance.
	Power Supply	<ul style="list-style-type: none"> - CCC-certified branded adapter. - Ensures safety with low voltage. 	<ul style="list-style-type: none"> - 220V power cord. - High voltage poses safety risks. - Potential electric shock if grounding is poor.

iMeeting PD156 (15.6" retractable screen)

Category	Item	Infobit	Other Manufacturers
Craftsmanship	Precision	<ul style="list-style-type: none"> - Extremely thin LCD frame (8mm with touchscreen). - Small, uniform gaps between hinge and panel ports. - Aluminum alloy sliding USB ports, stylish and secure. 	<ul style="list-style-type: none"> - Thicker frame (over 10mm with touchscreen). - Large gaps between hinge and panel ports. - Plastic USB port covers, prone to detachment, aging, and less aesthetic.
	Surface Treatment	<ul style="list-style-type: none"> - Multiple processes: brushing, polishing, diamond sand spraying. - Fine and premium texture. 	<ul style="list-style-type: none"> - Coarse brushing or ordinary sand spraying. - Grainy texture, overall rough feel.

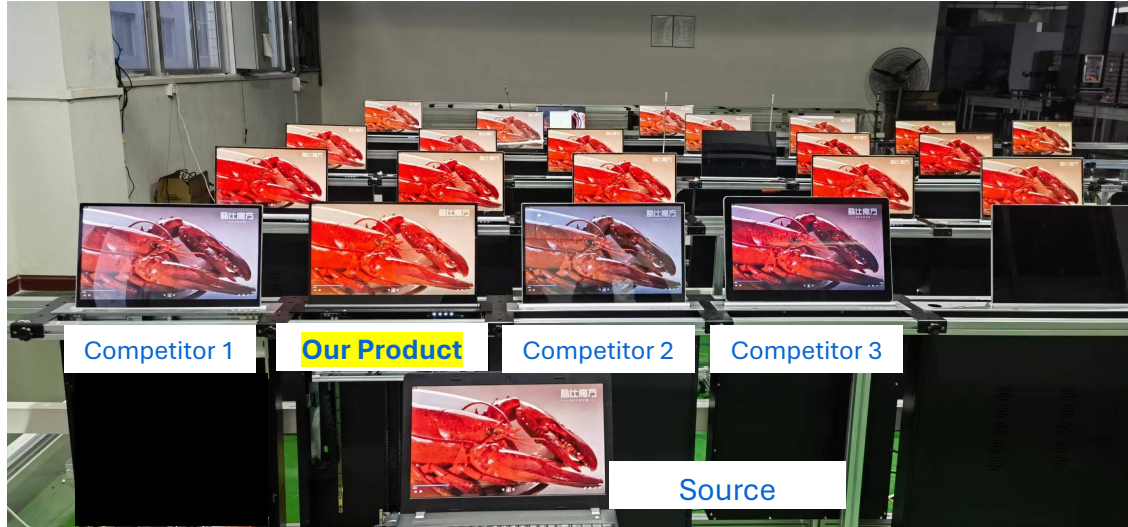
iMeeting PD156 (15.6" retractable screen)

Category	Item	Infobit AV	Other Manufacturers
Stability	System Design	<ul style="list-style-type: none"> - Uses a low-voltage 12V drive system: <ol style="list-style-type: none"> 1. Control board and motor are less prone to damage. 2. Eliminates risks of leakage or electric shock. 	<ul style="list-style-type: none"> - Relies on a high-voltage 220V drive system: <ol style="list-style-type: none"> 1. Voltage instability can easily damage the control board and motor. 2. Safety concerns arise due to poor grounding and potential electric shocks.
	Control Board	<ul style="list-style-type: none"> - Integrated design with a chip-based low-voltage control board: <ol style="list-style-type: none"> 1. Highly functional and reliable. 2. Electronic components meet commercial-grade static electricity testing standards (4KV). 	<ul style="list-style-type: none"> - Uses 220V or basic low-voltage designs: <ol style="list-style-type: none"> 1. Limited functionality with ordinary components prone to failure. 2. Basic materials often lead to electronic circuit issues.
	Motor	<ul style="list-style-type: none"> - High-precision DC motor: <p>* Features longer lifespan and higher resistance to voltage fluctuations.</p>	<ul style="list-style-type: none"> - AC motor paired with a 220V control board: <p>* Prone to damage under unstable voltage and current conditions.</p>
	Protection Design	<ul style="list-style-type: none"> - Safety-focused operational design: <ol style="list-style-type: none"> 1. Automatically stops when encountering obstacles to protect the equipment. 2. Anti-pinch door mechanism ensures user safety. 	<ul style="list-style-type: none"> - Limited protection features: <ol style="list-style-type: none"> 1. Fails to stop on obstruction, increasing the risk of damage. 2. Lacks safety mechanisms, posing potential injury risks.

iMeeting PD156 (15.6" retractable screen)

Category	Item	Infobit AV	Other Manufacturers
Durability	Internal Structure and Materials	<ul style="list-style-type: none"> - Optimized lift mechanism: <ol style="list-style-type: none"> 1. Simple and efficient, reducing potential failure points. 2. High-quality materials ensure at least 100,000 operational cycles. 	<ul style="list-style-type: none"> - Complex lift designs: <ol style="list-style-type: none"> 1. Overly complicated with excess wiring and connectors, increasing failure risks. 2. Uses standard materials prone to wiring issues.
	Built-in Terminal Design	<ul style="list-style-type: none"> - Integrated paperless terminal with simplified internal cabling: <ol style="list-style-type: none"> 1. Compact and streamlined installation with only one power cable and one data cable required. 	<ul style="list-style-type: none"> - External terminals with multiple connections: <ol style="list-style-type: none"> 1. Cluttered wiring under desks, reducing installation efficiency.
Unique Features	Terminal Configuration	<ul style="list-style-type: none"> - Desktop-level terminal with superior performance: <ol style="list-style-type: none"> 1. Standard configuration includes 8GB RAM and 128GB storage. 2. Ensures stability and reliability with branded components. 3. Flexible customization available to meet specific requirements. 	<ul style="list-style-type: none"> - Notebook-style terminals with lower specifications: <ol style="list-style-type: none"> 1. Basic configuration with 4GB RAM and 64GB storage. 2. Cheaper components with reduced reliability. 3. Limited customization options.

Display Color Comparison



Screen Comparison

Our Product



Fully Laminated Screen with No Whitening Effect

Competitor's Product



Non-Laminated Screen with Noticeable Whitening Effect

Our Product



Resistant to Dust and Moisture

Competitor's Product



Prone to Dust and Moisture Ingress

Our Product



Full Viewing Angle

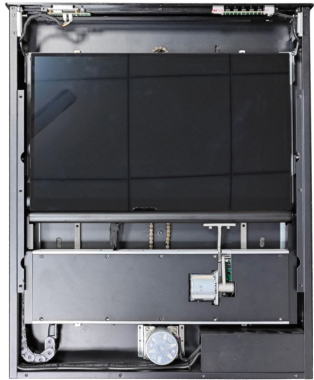
Competitor's Product



Limited Viewing Angle

Internal Structure and Comparison

Retracted State Comparison



Our Product



Competitor 1



Competitor 2

Extended State Comparison



Our Product

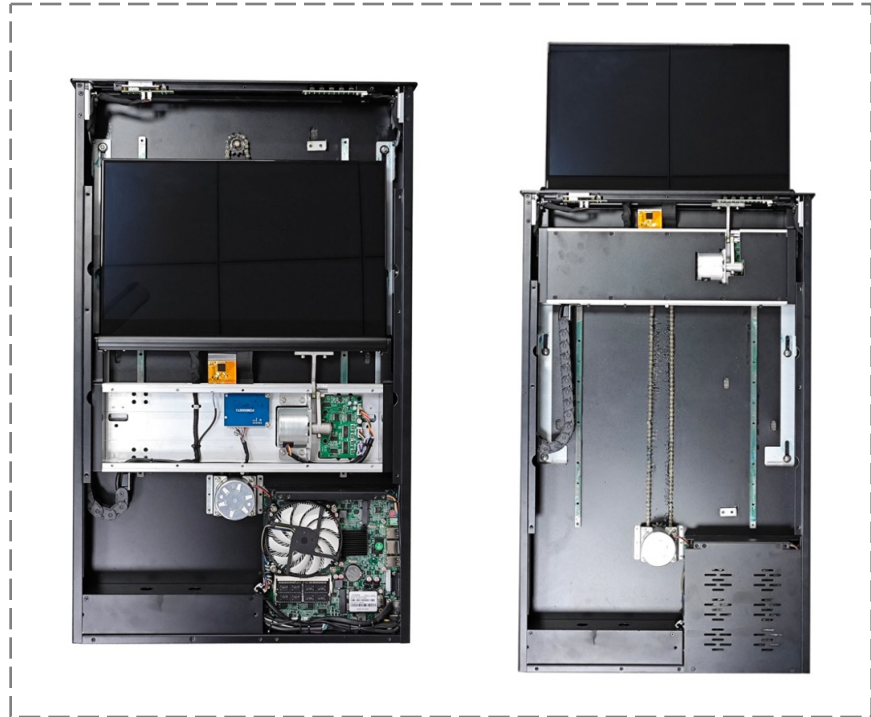


Competitor 1



Competitor 2

iMeeting PD156 Internal Structure (without cover)



Details and Comparison

Screen Lamination Technology



Ultra-Narrow Bezel
2.5D Full Lamination



Competitors: Thick
Bezel Design

Power Supply



12V Safe Voltage



Competitor
s: 220V

Precision



Precision-
Fitted Gaps



Competitors:
Bigger Gaps

USB Port



Durable Metal
USB Slide-In
Design



Competitors: Plastic
USB Cover Design
Prone to Aging and
Detachment

Product Images and Accessories



Remote Control



Optional: 15W Full-Power High-Performance Wireless Charging

Important Notice: At Infobit AV, we are committed to delivering exceptional user experiences through continuous product updates and enhancements. While we aim to inform you of upgrades in advance, there may be rare instances where immediate communication isn't possible. Rest assured, we are dedicated to adapting and refining our solutions to meet your needs. Thank you for your trust and support as we innovate for a brighter future!